

IMAGINE... CANAL PARK



**Community Engagement
Results at a Glance**

Prepared by 8 80 Cities



imagineduluth.com/canalpark2

IMAGINE CANAL PARK

Imagine Canal Park is a collaborative project to chart a future for one of Duluth's most beloved and unique areas. In fall 2017, the City of Duluth led a comprehensive community engagement process to learn what residents, visitors, business owners, and other stakeholders think

about Canal Park, and what ideas they have for improving the area. Hundreds of people shared thoughts, concerns, criticisms, and praise for Canal Park through online surveys, at public events, and at community workshops.

A Collective Vision

We heard that people value Canal Park and want the area to thrive. People also told us that changes are needed to ensure Canal Park succeeds as a place for people to work, play, live, visit, and travel through. We sorted through thousands of sticky notes, online comments, and surveys to develop a collective vision statement for the future of Canal Park:

Vision Statement

In 2035, Canal Park will be a unique and accessible year-round hub that is designed for residents and visitors of all ages, and is seamlessly connected to the rest of the city.

This vision statement reflects two priority areas: 1) Mobility and access, and 2) Public space and programming. Using the data collected, we developed nine recommendations to guide the future growth and development of Canal Park:

Recommendations

Mobility & Access

1. Create connectivity to the city
2. Improve access to the lake
3. Enhance access for all modes of transportation
4. Fix the parking problem
5. Make Canal Park a pedestrian paradise

Public Space & Programming

1. Host diverse events and programs
2. Make Canal Park an all-season destination
3. Create more spaces for people
4. Fill Canal Park with play

These recommendations are described in detail in the full Community Engagement Summary Report. The full report is available at imagineduluth.com/canalpark2.

"Canal Park is special, but unfortunately it sometimes suffers because of its own popularity."

- Survey Participant

"We need more residents that can easily access these areas to help them thrive and not just fit the 9-5 or the tourists (whom I love and appreciate). Great things are happening and I'm excited for the continued improvements!"

- Survey Participant

Next Steps

The next challenge is to put these recommendations into action. In early 2018, the City of Duluth will begin testing new programs and interventions as pilot projects.

Based on public feedback, we identified six potential pilot projects that could strategically inform the future improvement and development of Canal Park:

Pilot Project Ideas

- 1 Connect Canal Park Project:**
 - Pedestrian wayfinding system
 - Enhancements of the I-35 overpass
 - Improve connection at Lake Place Park
- 2 Pedestrian Paradise Project**
 - Transform parking lot into outdoor plaza
 - Outdoor network of rest zones
- 3 Buchanan Plaza Project**
 - Temporarily pedestrianize Buchanan St.
 - Beautify alleyway beside Little Angie's
- 4 Lake Access Project**
 - Activate Harbor Rd and Baywalk
 - Create play opportunities along Lakewalk
- 5 Canal Park Winter Village Project**
 - Transform Canal Park into a winter village
- 6 Canal Park on the Move Project**
 - Enhance visibility, comfort of trolley stops
 - Temporarily eliminate parking and promote other modes of transportation

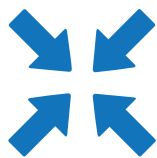
Each pilot project that goes forward will be closely evaluated to determine what changes should be made permanent.

The final report, due in fall 2018, will feature results from the pilot project phase, and include a final set of recommendations to shape the future of Canal Park.



ENGAGEMENT RESULTS AT A GLANCE

The Vision: In 2035, Canal Park will be...



a unique, accessible,
year-round hub



designed for residents
and visitors of all ages



seamlessly connected
to the rest of the city

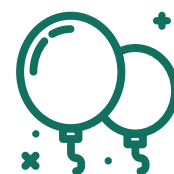
Who We Talked To



1,200+
people engaged



706
online survey responses



400
launch event participants

Of all online survey respondents:

Local / Visitors

82% Duluth residents
18% Visiting or
working in Duluth

Gender

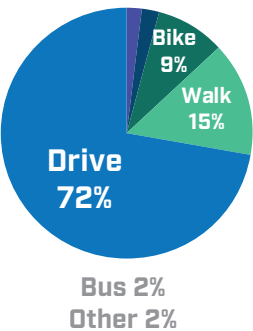
61% Female **39%** Male
<1% Other

Age

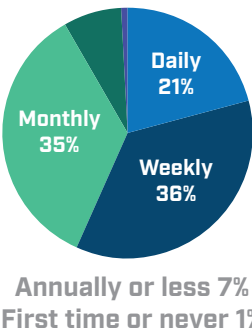
20-30	31-40	41-64	65+
20%	28%	40%	12%
<1% 15-19			

Current State of Affairs

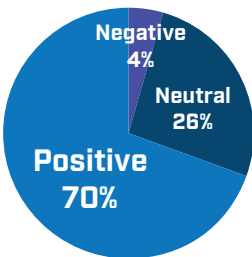
Getting to Canal Park



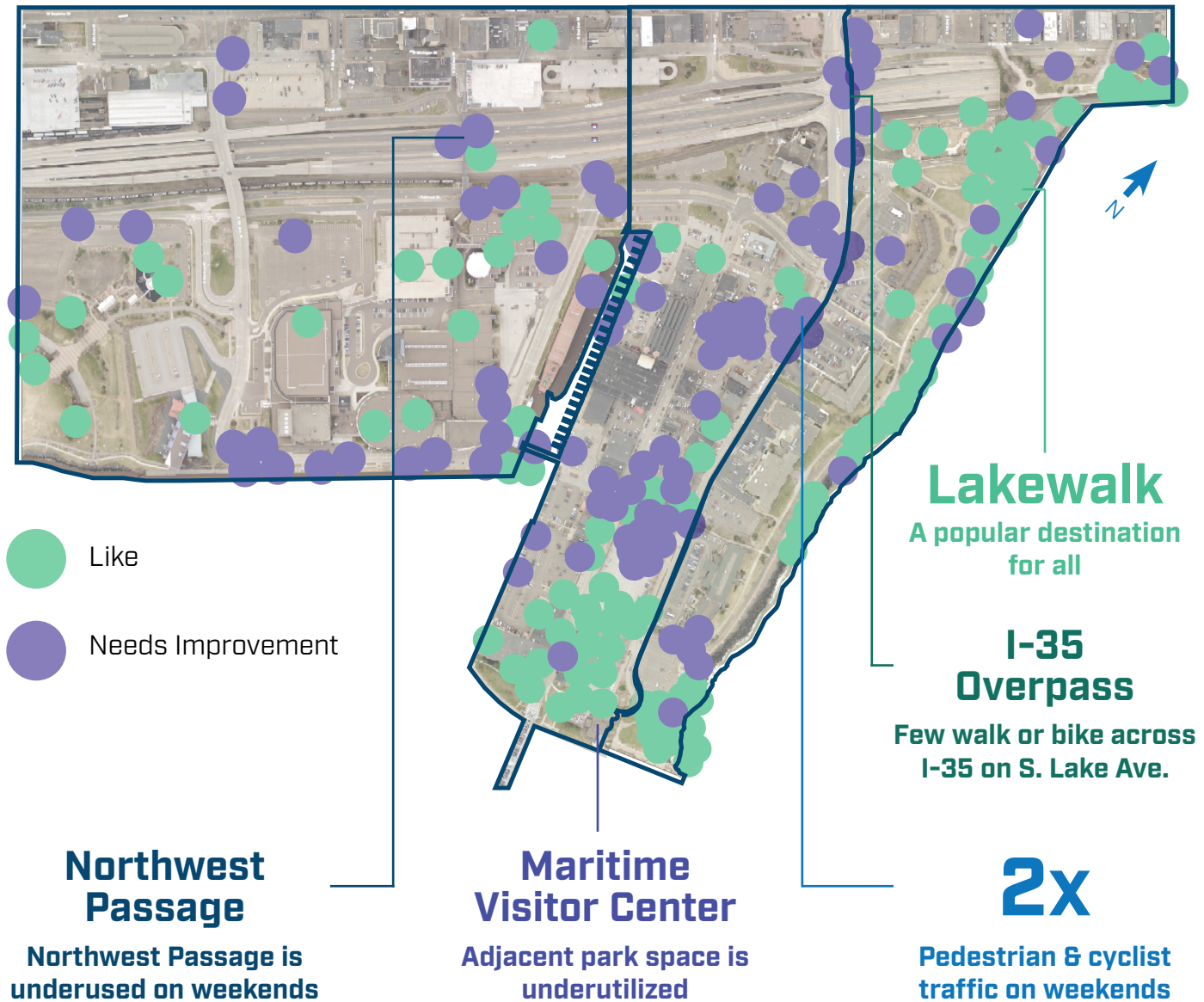
Frequency of Visits



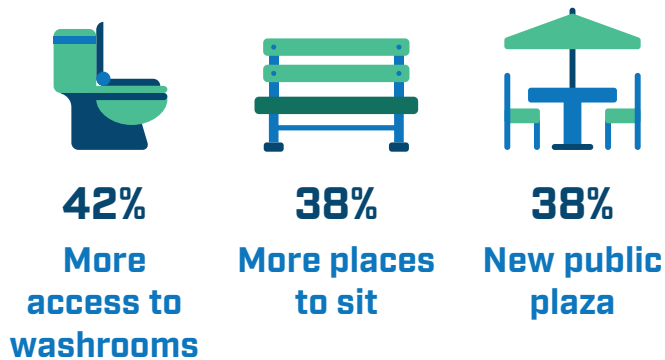
Perception of Area



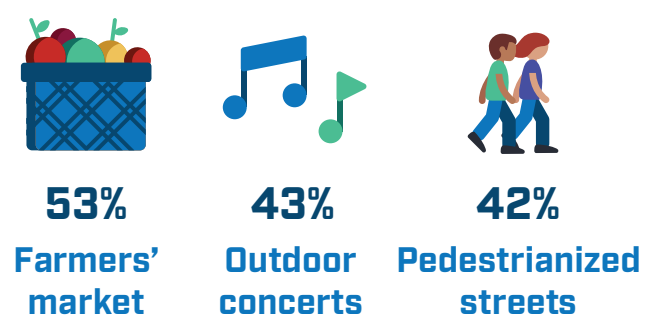
What We Saw & Heard



Top 3 design changes people would like to see



Top 3 programs people would like to see



IMAGINE... CANALPARK

The City of Duluth is leading the Imagine Canal Park project to develop a plan for the future of Canal Park as part of the city-wide Imagine Duluth 2035 process.



imagineduluth.com/canalpark2

