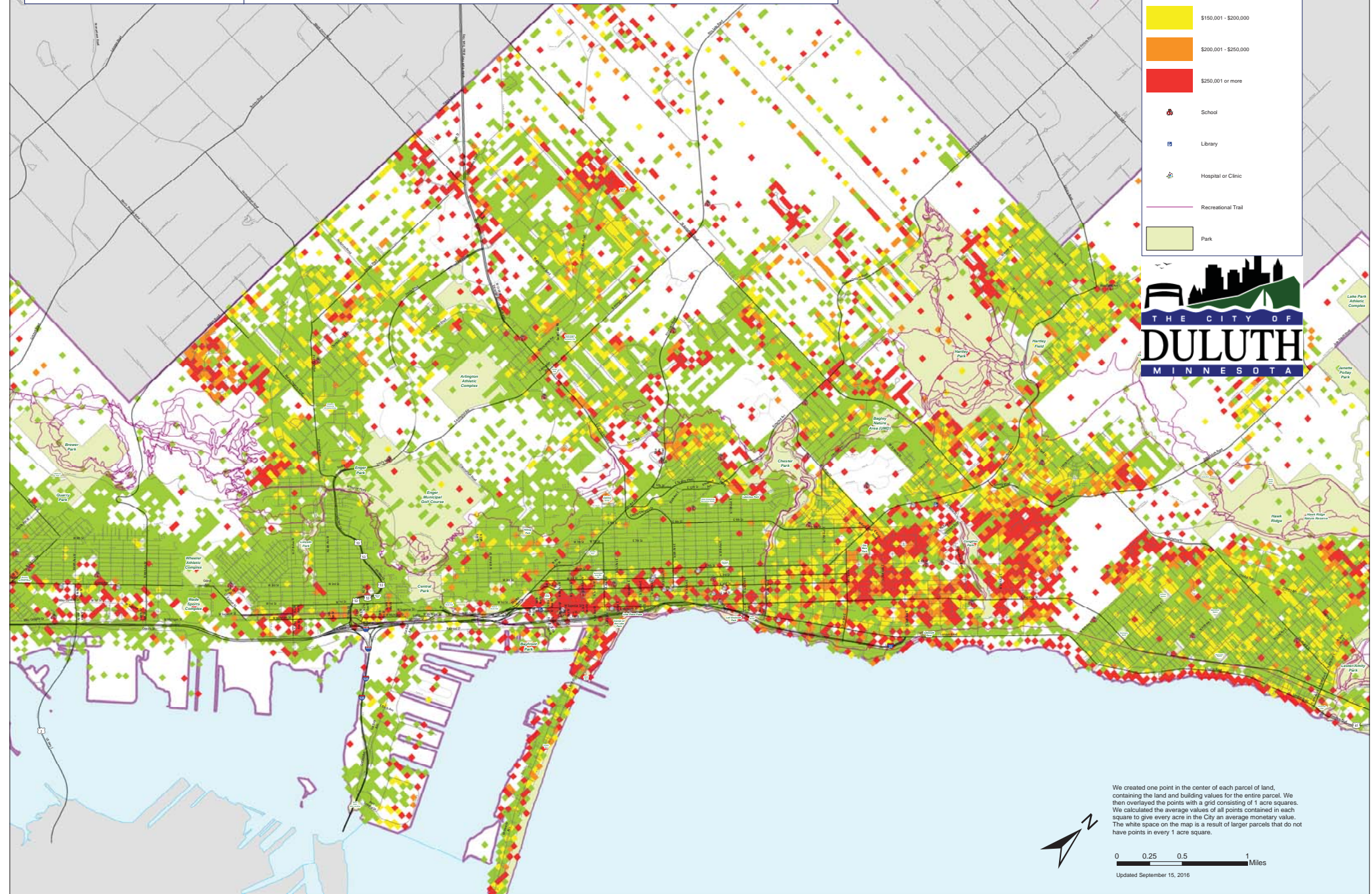


Average Land and Building Value Per Acre As Assessed by St. Louis County

Legend

- No Parcel Centroid
- \$150,000 or less
- \$150,001 - \$200,000
- \$200,001 - \$250,000
- \$250,001 or more
- School
- Library
- Hospital or Clinic
- Recreational Trail
- Park



We created one point in the center of each parcel of land, containing the land and building values for the entire parcel. We then overlaid the points with a grid consisting of 1 acre squares. We calculated the average values of all points contained in each square to give every acre in the City an average monetary value. The white space on the map is a result of larger parcels that do not have points in every 1 acre square.

