

Hartley Nature Center

Hartley Nature Center is located in Hartley Park and is operated by a non-profit. The building was constructed in 2003 and incorporated features of accessibility at the time of construction. The building includes multiple classroom / meeting room spaces as well as offices and multi-fixture toilet rooms.

Hartley Nature Center

Accessibility Review

Location	Solution / Comments	Qty	Unit Cost	Total Cost	Priority	Estimated Compl. Date	Person Responsible	Actual Compl. Date	Actual Cost
JQP # / Item #									
Classroom 1									
26B 15669	Provide a portable assistive listening system with signage. IBC 1108.2.6 <i>Photo 1.</i>	1	\$1,200	\$1,200	2				
Classroom 3									
26B 15679	Provide a portable assistive listening system with signage. IBC 1108.2.6 <i>Cost already calculated.</i>	1	\$0	\$0	2				
Parking									
05H 15680	Stripe to provide an accessible parking stall that is 8' wide with an adjacent 8' access aisle. It is preferred that the access aisle be located on the passenger side of the vehicle. MN 1341 502.4.2 <i>Re-stripe the accessible parking spaces. There are currently 2 signs designating accessible parking spaces, but the striping on the surface has faded.</i>	1	\$150	\$150	2				
				Priority # 2 Total	\$1,350				

Location JQP # / Item #	Solution / Comments	Qty	Unit Cost	Total Cost	Priority	Estimated Compl. Date	Person Responsible	Actual Compl. Date	Actual Cost
Classroom 1									
40B1 15668	Relocate compliant sign to the wall adjacent to latch side of door, 48" minimum to the baseline of the lowest Braille characters and 60" maximum to the baseline of the highest tactile character. ICC/ANSI 703.3.10, 703.4.5	1	\$30	\$30	3				
Drinking Fountain									
41A1 15675	Provide a minimum of one drinking fountain that has a 36" spout height accessible for persons using wheelchairs (low) and one standard height (high) drinking fountain with a spout height 38" minimum and 43" maximum for persons who have difficulty bending or stooping. ANSI 602.4 <i>Currently provides 1 drinking fountain with 36" spout height.</i>	1	\$1,500	\$1,500	3				
Men's Toilet Room									
22H1 15676	Provide staple style pulls on both sides of the accessible stall door near the latch. ANSI 604.8.3 <i>Photo 4.</i>	2	\$50	\$100	3				
22Z 15677	Provide a coat hook positioned so the highest operable part is no higher than 48". ICC / ANSI 604.11.	1	\$50	\$50	3				
				<i>Location Subtotal:</i>					\$150
Women's Toilet Room									
22H1 15670	Provide staple style pulls on both sides of the accessible stall door near the latch. ANSI 604.8.3 <i>Photo 4.</i>	2	\$50	\$100	3				
22Z 15671	Provide a coat hook positioned so the highest operable part is no higher than 48". ICC / ANSI 604.11	1	\$50	\$50	3				
				<i>Location Subtotal:</i>					\$150
				Priority # 3 Total					\$1,830

Location JQP # / Item #	Solution / Comments	Qty	Unit Cost	Total Cost	Priority	Estimated Compl. Date	Person Responsible	Actual Compl. Date	Actual Cost
Men's Toilet Room									
20P 15678	Lower the window in the door (or the sidelite) so the bottom is at 43" maximum. ICC / ANSI 404.2.10 <i>Currently at 48".</i>	1	\$250	\$250	4				
Washroom									
22V 15674	Install a full-height mirror or provide a mirror where the bottom of the reflective surface is no higher than 40" above the floor. MN 1341 603.3 <i>Currently at 41".</i>	1	\$300	\$300	4				
Women's Toilet Room									
20P 15673	Lower the window in the door (or the sidelite) so the bottom is at 43" maximum. ICC / ANSI 404.2.10 <i>Currently at 48". The door was propped 'open' at the time of site visit.</i>	1	\$250	\$250	4				
22-20B 15672	Re-hinge / relocate door to provide needed maneuvering clearance on the latch pull side of the door. ICC / ANSI 404.2.3, Table 404.2.3.1 <i>Currently provides 10 1/2" on the pull side of the door. The door was propped 'open' at the time of site visit. Photo 5.</i>	1	\$750	\$750	4				
				<i>Location Subtotal:</i>	\$1,000				
				Priority # 4 Total	\$1,550				

Transition Plan - (location/priority)

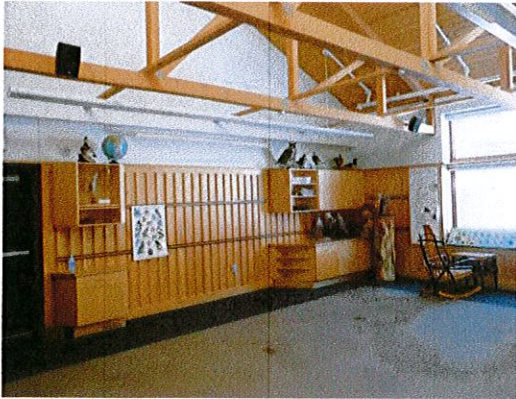


Photo 1: View of typical classroom. Sound systems are provided. Acquire an assistive listening system.

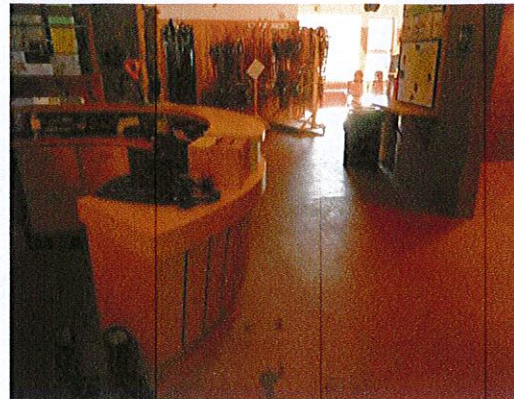


Photo 2: A low section of reception counter is provided. *This is a good example of accessibility.*



Photo 3: An accessible toilet compartment is provided in the men's and women's toilet rooms. *This is a good example of accessibility.*

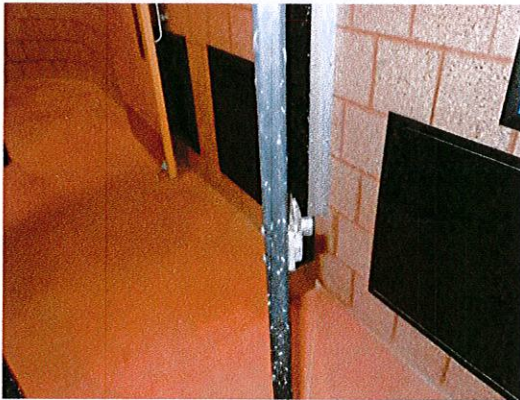


Photo 4: Add pull style hardware to both sides of the accessible stall door.

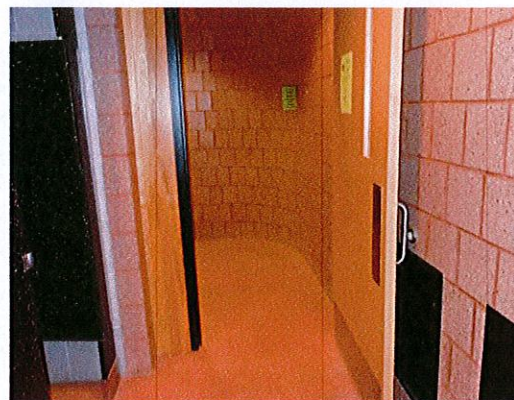


Photo 5: The women's toilet room does not currently provide maneuvering clearance on the pull side of the door. (The door is propped in the 'open' position.)