



City of Duluth Communications Office

Mayor Emily Larson
411 West First Street • Duluth, Minnesota 55802 • www.duluthmn.gov

For more information contact Kate Van Daele,
Public Information Officer at 218-730-5309

DATE: 4/22/2021

SUBJECT: Water main leak on Arrowhead Road will be repaired on Saturday, April 24

BY: Kate Van Daele, Public Information Officer

Water main leak on Arrowhead Road will be repaired on Saturday, April 24

[Duluth, MN] City of Duluth Utility Operations crews will be repairing a water main leak at the intersection of Dodge Avenue and Arrowhead Road on Saturday, April 24th.

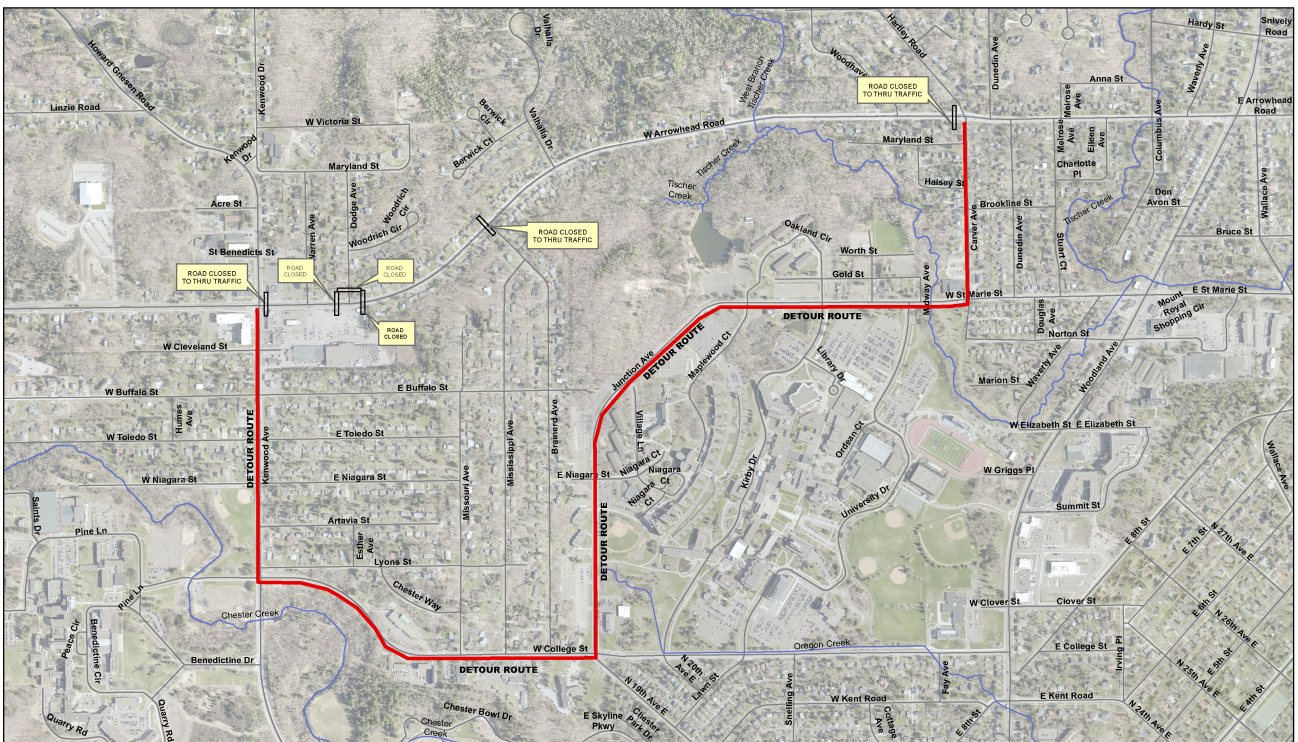
Arrowhead Road will be closed to through traffic for the duration of the repair, starting at 7:00 a.m. and is expected to take approximately eight hours to complete. Access to all businesses and homes along Arrowhead Road will be open during the closure. The north driveway of the Kenwood Shopping Center will be closed at the Dodge Avenue intersection.

A detour will be posted for Arrowhead Road, using Kenwood Avenue, College Street, Junction/St. Marie, and Carver Avenues.

Water will be shut off during the repair and will affect 19 homes on Woodrich Circle and Dodge Avenue between Arrowhead Road and Woodrich Circle. Notices of the shutoff will be hand-delivered to the affected residences on Friday, April 23rd.

A map of the detour is attached.

###



1 inch = 600 feet

City of Duluth
Public Works & Utilities

Date: 4/20/2021

Detour map

The City of Duluth has tried to ensure that the information contained in this map or electronic document is accurate. The City of Duluth makes no warranty or guarantee concerning the accuracy or reliability. This drawing is neither a legally recorded map nor a survey and is not intended to be used as one. The drawing is a compilation of records, information and data located in various City, County and State offices and other sources affecting the area shown and is to be used for reference purposes only. The City of Duluth shall not be liable for errors contained within this data provided or for any damages in connection with the use of this information contained within.

The City of Duluth requires that this map/data not be redistributed to any party in whole or in part, including any derivative works or products generated by combining the data with other data, unless authorized by the City of Duluth GIS office.