



**FOR IMMEDIATE RELEASE**  
**City of Duluth - Communications Office**

411 West First Street, Duluth, Minnesota 55802  
218-730-5230 | www.duluthmn.gov | Emily Larson, Mayor

For more information contact Pakou Ly, Public Information Coordinator 218-730-5309

**DATE: 9/21/2018**

**SUBJECT: Gas Utility Upgrade Project Planned on 3rd Ave East in Downtown Duluth (revised)**

**BY: Pakou Ly, Communications Office**

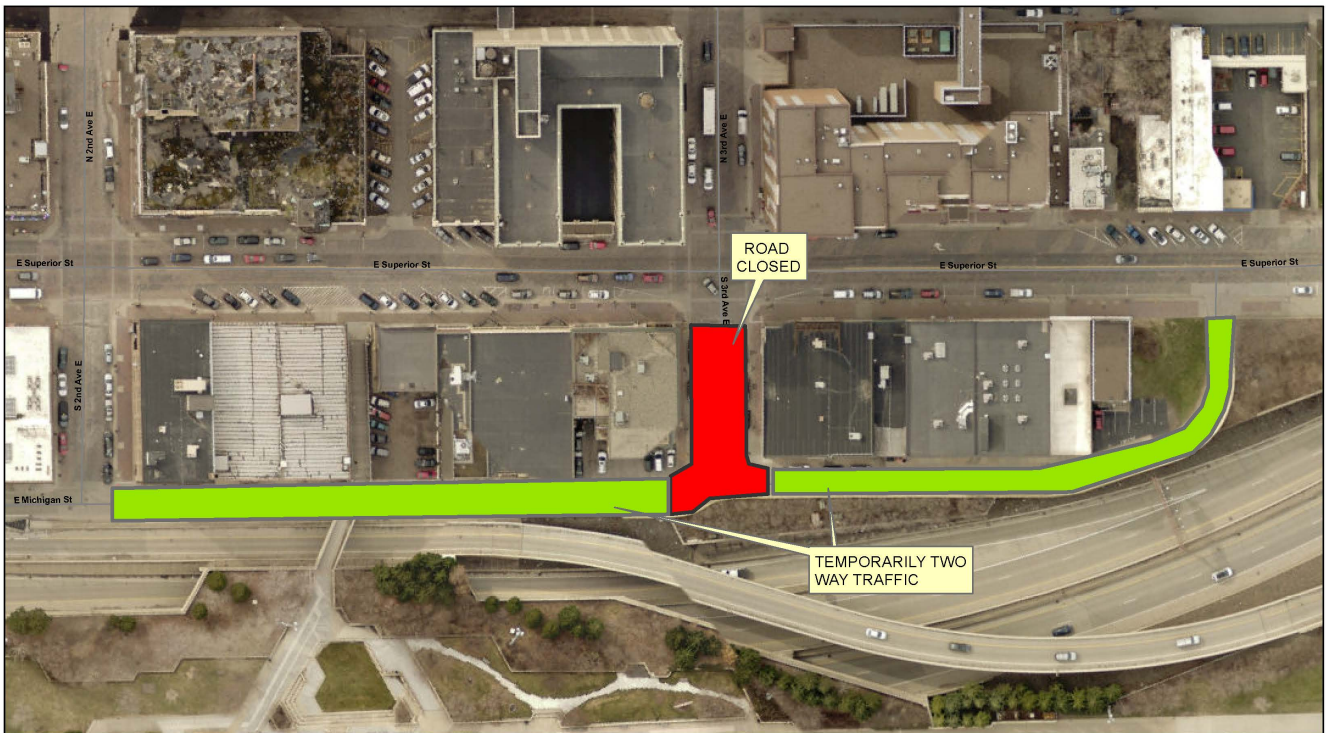
**Gas Utility Upgrade Project Planned on 3rd Ave East in Downtown Duluth (revised)**

[Duluth, MN] - The City of Duluth Public Works and Utilities department is planning to upgrade a gas main in downtown Duluth on East 3rd Ave between Superior Street and Michigan Street to improve service and as a preparatory step before the commencement of phase 2 of the Superior Street Reconstruction in 2019. The gas upgrade will ensure that properties served by this gas main will have long term reliable service. The City anticipates starting the project on September 25, 2018.

The avenue, just south of Superior Street and down to the Michigan Street intersection will be closed. Signed detours will be installed. Two way traffic will be allowed heading south from 4th Ave East at Superior Street to access businesses and parking in the 300 block of Michigan St. and also between 2nd Ave E and the project zone (see map). Crews will be working on site from about 8 AM until 7 PM to expedite the project. Access to the I35 entrance ramp from E 2nd Ave and Michigan Street will be maintained.

The project should be completed in about two weeks with bituminous installed for the winter and permanent road surface installed in fall of 2019.

###



The City of Duluth has tried to ensure that the information contained in this map or electronic document is accurate. The City of Duluth makes no warranty or guarantee concerning the accuracy or reliability. This drawing/data is neither a legally recorded map nor a survey and is not intended to be used as one. The drawing/data is a compilation of records, information and data located in various City, County and State offices and other sources affecting the area shown and is to be used for reference purposes only. The City of Duluth shall not be liable for errors contained within this data provided or for any damages in connection with the use of this information contained within.

The City of Duluth requires that this map/data not be redistributed to any party in whole or in part, including any derivative works of products generated by combining the data with other data, unless authorized by the City of Duluth GIS office.

**TRAFFIC CLOSURES BEGINNING  
SEPTEMBER 25TH**

1 inch = 60 feet

Date: 9/20/2018

